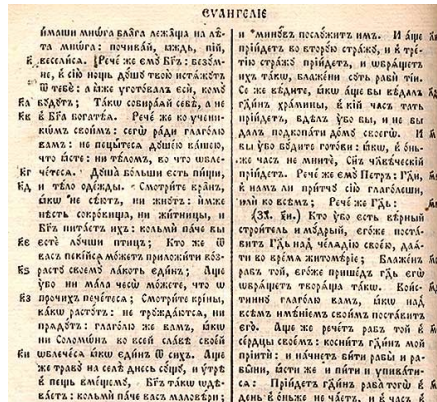


DEBATE ON BIBLICAL TEXTUAL CRITICISM, OCTOBER 15, RIVER FOREST, IL



LUTHERAN THEOLOGIAN TO DEBATE TEXTUAL CRITICISM OF THE BIBLE

Dr. John Warwick Montgomery, Distinguished Research Professor of Philosophy at Concordia University Wisconsin and Dr. Jeffrey John Kloha, Provost and Professor of Exegetical Theology at Concordia Seminary, Saint Louis, will conduct a debate about the philosophies of Biblical textual criticism on Saturday, October 15th, 2016 at Concordia University-Chicago in River Forest, Illinois.

The title of the debate is: “Textual and Literary Judgments on the Biblical Text—What Happens to the Lutheran Commitment to Scriptural Inerrancy?”

In recent years, several different philosophies of textual criticism have been offered to deal with the problem of textual variants in the biblical materials. The debate will focus on the impact of one’s choice of textual theory on the classic Lutheran conviction that the Holy Scriptures, as originally given, are the inerrant Word of God. This subject is of critical importance not just for theologians and Christian scholars, but also for pastors, teachers, and every Bible-reading layman.

There is no admission fee. The debate will take place at the Chapel of Our Lord/Werner Auditorium at Concordia University-Chicago in River Forest (see <https://cuchicago.edu>). Starting time for the debate will be 9:30 AM Central Daylight Savings Time; closing time will be 1:30 PM, or 2:00 PM at the latest. The audience will have an opportunity to ask questions of either or both lecturers for 45 minutes at the end of the debate period, which “Question and Answer” session will be moderated.

Parking is available on-campus in the multi-level University Parking Structure in the northeast corner of campus, on the west side of Bonnie Brae Place, with its entrance just south of Division Street in River Forest. Other on-campus parking is available at: 1) Koehneke Community Center North Lot 5, which includes handicapped parking—entrance from the street is the same as the University Parking Structure; 2) Krauss Lot 3, entrance from Augusta Street, west of Bonnie Brae Place. For a map of the campus, see: https://www.cuchicago.edu/globalassets/global/maps/campusmap_emergencyphones_2016_new.pdf.

More information about Dr. Kloha and his work can be found at: <http://www.csl.edu/faculty/exegetical/kloha>. More information about Dr. Montgomery and his work can be found at: www.jwm.christendom.co.uk and www.apologeticsacademy.eu.

The debate is being sponsored by the Lutheran Concerns Association (<http://lutheranclanion.org>), along with our co-sponsors: Balance-Concord, Inc., The Brothers of John the Steadfast (www.steadfastlutherans.org), The Association of Confessing Evangelical Lutheran Congregations (www.acecl.net), Minnesota North Confessional Lutherans, and Texas Confessional Lutherans.