

Bethlehem Lutheran church

Lutheran Church Missouri Synod (LCMS)

- [Home](#)
- [Worship](#)
- [Education](#)
- [Celebrations](#)
- [Preschool](#)
- [Music](#)
- [Outreach](#)
- [Biographies](#)
- [Directions](#)
- [Contact](#)

Biographies

- [Pastor Eugene Baade](#)
- [Music and Choir Director James Hing](#)
- [Bell Choir Director Mark Humphrey](#)

Pastor Eugene Baade

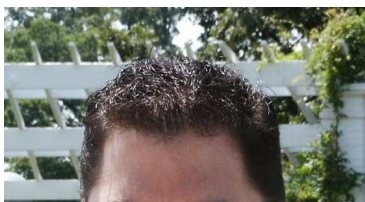
Pastor Eugene ("Gene") W. Baade has been serving Bethlehem for thirteen years. He was ordained into the ministry of The Lutheran Church - Missouri Synod in 1971. He previously served a dual parish in Rhinelander - Bundy, Wisconsin, and a downtown congregation in Portland, Oregon. Pastor Baade holds a Bachelor of Science from Oklahoma State University, a Bachelor of Divinity and a Master of Divinity from Concordia Theological Seminary, Springfield, Illinois, and a Master of Arts from Valparaiso University, Valparaiso, Indiana. Before entering the seminary he taught U. S. History at John Marshall High School in Oklahoma City, Oklahoma.

Pastor Baade has been married thirty-nine years to Joyce Baade, and they have two daughters. He greatly respects and enjoys the historic calling of the pastoral ministry in his preaching, pastoral care, and teaching. His personal interests are in fine music and books, landscape photography, and the beauty of all of God's creation from sea to shining sea.



Pastor's desire is that Bethlehem congregation will welcome with warmth and sincerity all who pass through its doors, and that the Gospel of Jesus Christ will be preached and lived in our congregation with the goal of introducing Christ as a redeeming presence in the lives of members and visitors alike.

James Hing



It all began in 1982 at Sacred Heart Church Tribeshill, New York where at age 14, Hing became an organist!

This is his 25th year as an organist and church musician. His leadership in music & choral conducting has spanned a number of church music ministries, community chorus' & civic groups in New York, the Midwest, Texas, and his

home state here in Washington.

In addition to his church music ministry Hing's major music accomplishments include performing *Miss Behavin'* alongside Tony Award-winner Nell Carter at the 20th Anniversary celebration of the Turtle Creek Chorale in Dallas, Texas. His international debut was in 2002 at the renowned Opera House in Sydney, Australia as part of the 600-voice International Cultural Arts Festival Choir, followed by a 2003 debut at Carnegie Hall in New York as part of the Dallas based 225-voice men's chorus, the Turtle Creek Chorale.

Hing has recorded nine choral CD's and his theatre credits include *Oliver Twist*, *Music Man*, *Sound of Music*, *Showboat*, and *Harvey*. He performs each year for numerous audiences' and volunteers more than 500 hours annually to service projects and benefit performances. Hing is the former Artistic Director of Seattle Lesbian & Gay Chorus and member of the Seattle Men's Chorus. Currently Hing is Artistic Director of Choral Sounds Northwest, Burien Washington and member of the American Chorale Directors Association, American Guild of Organists and Association of Lutheran Church Musicians. For more information visit www.jameshing.com

Mark Humphrey

Mark Bio

[Home](#) | [Worship](#) | [Education](#) | [Celebrations](#) | [Preschool](#) | [Music](#) | [Outreach](#) | [Biographies](#) | [Directions](#) | [Contact](#)